



7455.2100

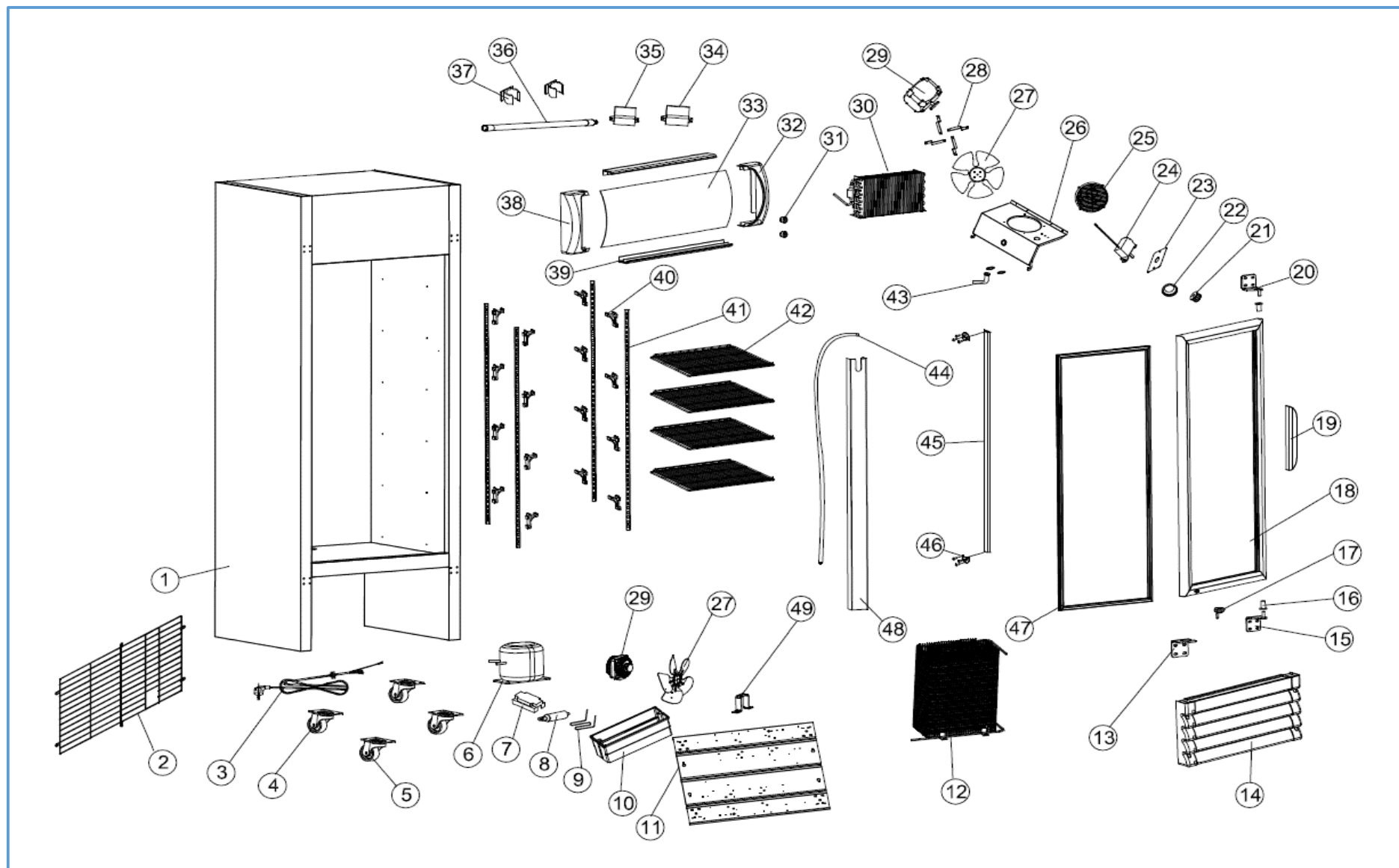
Onderdelen informatie

Erzatzteil information

Spare part information

Information de pièces





Onderdelenlijst 7455.2100

| POS: | Art.No.: | Omschrijving: | Aantal: |
|------|-----------|--------------------------------|---------|
| 1 | | Cabinet body | 1 |
| 2 | | Back grid | 1 |
| 3 | | Power wire | 1 |
| 4 | 9338.1830 | Castor without brake | 2 |
| 5 | 9338.1865 | Castor with brake | 2 |
| 6 | 9338.2224 | Compressor | 1 |
| 7 | | Wiring connecting box | 1 |
| 8 | | Dryer filter | 1 |
| 9 | | Water self-evaporation pipe | 1 |
| 10 | | Water tray | 1 |
| 11 | | Compressor plate | 1 |
| 12 | 9338.2228 | Condenser | 1 |
| 13 | | Door bottom supporter | 1 |
| 14 | 9338.2372 | Compressor front panel | 1 |
| 15 | | Door bottom hinge | 1 |
| 16 | | Door hinge cover | 2 |
| 17 | | Lock | 1 |
| 18 | | door | 1 |
| 19 | 9338.1833 | Door handle | 1 |
| 20 | | Door upper hinge | 1 |
| 21 | 9338.1900 | Mechanical thermostat | 1 |
| 22 | | Thermostat outer marking panel | 1 |
| 23 | | Therometer | 1 |
| 24 | 9338.1925 | Thermostat knob | 1 |
| 25 | | Evaporator fan cover | 1 |
| 26 | | Evaporator fan plate | 1 |
| 27 | 9338.1885 | Evaporator fan motor blade | 2 |
| 28 | | Evaporator fan supporter | 4 |
| 29 | 9338.1890 | evaporator fan motor | 2 |
| 30 | 9338.2226 | Evaporator | 1 |
| 31 | | Light switch | 2 |
| 32 | 9338.1848 | Right bracket for light canopy | 1 |
| 33 | 9338.1848 | Canopy plexi cover | 1 |
| 34 | 9338.1895 | LED drive power | 1 |
| 35 | 9338.1895 | LED drive power | 1 |
| 36 | | T5 LED light | 1 |
| 37 | | R clamp | 2 |
| 38 | 9338.1848 | Left bracket for light canopy | 1 |
| 39 | 9338.1848 | bracket for light canopy | 2 |
| 40 | 9338.1905 | Shelf K-clip | 16 |
| 41 | | Shelf support | 4 |
| 42 | | shelf | 4 |
| 43 | | Drainage sucker | 1 |
| 44 | | Drainage pipe | 1 |
| 45 | 9338.1835 | LED light | 1 |
| 46 | | LED light end cover | 2 |
| 47 | 9338.2230 | Gasket | 1 |

Onderdelenlijst 7455.2100

| POS: | Art.No.: | Omschrijving: | Aantal: |
|------|----------|---------------------------|---------|
| 48 | | Drainage pipe outer plate | 1 |
| 49 | | Condenser fan supporter | 1 |